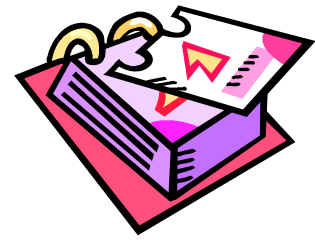


# Blossomfield Infant & Nursery School

NEWSLETTER  
January 2018



Telephone: 0121 744 5522  
Email: [office@blossomfield.solihull.sch.uk](mailto:office@blossomfield.solihull.sch.uk)  
Website: [www.blossomfield.org.uk](http://www.blossomfield.org.uk)

Dear Parents and Carers,

*We would like to wish everybody a  
Happy New Year and welcome you  
back to the spring term at  
Blossomfield.*

Although it is still cold and dark outside we are looking forward to the warmer, brighter days of the spring and summer terms that lie ahead of us.

Before moving on to a very busy and exciting spring term, we would like to take a moment to reflect on some of the events that took place in December and celebrate their success.



## Christmas Performances

All of the children in school enjoyed working towards producing and presenting their Year group Christmas Performances, which everybody enjoyed. Our friends at Brueton Place Retirement Living, on Blossomfield Road, thoroughly enjoyed a personal visit from Year 2 children who performed Carols for the residents. The Choir and some Year 2 children once again performed Carols for the Community at Touchwood.

All of these performances lifted spirits at this special time of year so a big thank you to children, staff and parents for all their hard work and support.

## Christmas Lunch, Parties and Entertainment



The children had a delicious Christmas Dinner and a Party Box Lunch, prepared by our fabulous Cook Rachel Holmes and her catering team. Our dedicated Lunchtime Supervisors ensured that each of these occasions ran smoothly, and was memorable for the children.

## Christmas Parties and Entertainment

Year One visited St James' Church where they spent the morning learning more about the meaning of Christmas. Party Day was fun packed with entertainment provided by Major Mustard who entertained our young audience with a very exciting puppet panto performance. Santa also managed to make an appearance with presents for all!



## Fundraising

The Blossomfield Community once again supported numerous charitable organisations during the autumn term.

Our first event of the year, 'The Big Coffee morning' in September, was supported by the PTA and raised funds for Macmillan.

Harvest food donations were donated to Crossroads, who feed the homeless in Birmingham City Centre and to Mildenhall House who support the young homeless of Solihull.

Remembrance Day was celebrated with a special assembly. Poppies and other items were on sale for children and the wider community during November.

Children wore spots for Children in Need day to raise funds for children near and far who are less well off than they are.

Jolly Jumper Day and a collection after the Christmas plays raised donations for our chosen charities this year, Birmingham Children's Hospital, Age UK and the Brainhouse Academy

## HEADTEACHER'S AWARD TO THE PTA



This group of parents and teachers worked tirelessly throughout the autumn term to organise events in order to raise funds that will benefit the whole school community. The final event of the autumn term, the Christmas Fair, raised a record £2600. I am sure that you will agree with me when I say that a big pat on the back is well deserved!

*The PTA is always keen to recruit new members. Please speak to a member of staff if you would like to offer your services and they will put you in touch with current members.*

### Staffing

We would like to welcome Mrs Chaudhuri to Blossomfield. She will be teaching Year 2 Oak class. Mrs Brady has now departed on maternity leave and Mrs Deane, who has worked with us before, will be teaching Birch class alongside Mrs Hazel for the rest of the academic year.

### Students in School

Teaching students from local Universities will be in school during the spring and summer terms. Individual classes will be notified of student involvement.



### School Nurse Suggests

I hope everyone had a happy and healthy Christmas. At this time of year when it's cold outside we might not be thinking about exercise but perhaps this is the time for the family to have some fun together getting out on



those new bikes and scooters that the children had for Christmas. If we can encourage the children to enjoy exercise when they are young they are likely to continue exercising as an adult with all of the health benefits that exercise brings.



## RESPECT IS BLOSSOMFIELD'S CORE VALUE

Please make a New Year's Resolution to drive and park legally, respectfully and considerately outside school.

### Family Workshops - please see diary dates

During the spring term we will be running 'Family Workshops' for children, parents and carers in school. These sessions will run for one hour at the beginning of the school day from 9am to 10am.



The nature of this activity means that younger siblings will not be able to attend, however Treehouse Kid's Club will be running a FREE crèche that parents can use during their child's session. **To book a place at this crèche please ring Treehouse directly on 0779 958 2256 at least two days before the session; places are limited.**

### Parent Consultations

We will be holding our spring term parent consultations on;

Thursday 1<sup>st</sup> March between 5.00 - 7.00pm

Tuesday 6<sup>th</sup> March between 5.00 - 7.00pm

Thursday 8<sup>th</sup> March between 4.00 - 6.00pm

This is an opportunity for you to talk to the teacher about your child's learning and next steps in learning. We are currently implementing an online appointment system which will streamline the booking and managing of appointments for parent, teachers and administrative staff.

***We will send out more details nearer the time.***

## Dates for After School Clubs

### **Solihull Moors Sports Development Scheme**

Monday - Reception - 8 Jan - 19 March

Wednesday - Y1 & Y2 - 10 Jan - 21 March

### **Animated Dance Academy**

Tuesday - Reception, Y1 & Y2 - 9 Jan - 27 March

### **Stardust Dance Academy**

Thursday - Reception, Y1 & Y2 - 11 Jan - 29 March

### **Le Club Francais (LCF Fun Languages)**

Thursday - Y1 & Y2 (classroom based) - 11 Jan - 29 March

Tuesday - Reception (classroom based) - 9 Jan - 27 March

## And finally...



### Youth Sports Trust Silver Quality Mark

We were very pleased to receive the, 'Youth Sports Trust Silver Quality Mark' last term. Thank you to Rachel Lee who has co-ordinated P.E. in school over the past year. The range and number of opportunities that she has scheduled for our children has been instrumental in our achievement of this award.



Blossomfield School Council was runner up for their School Council project on 'Kindness'. Solihull MP Julian Knight presented the House of Commons 'Speaker's School Council Award' to Blossomfield just before the Christmas break. The award was signed by the Rt. Hon John Bercow, MP and Speaker of the House of Commons. It is proudly displayed with our School Council Representative picture gallery by the school office.

## **SPRING TERM PROVISIONAL DATES**

18 <sup>th</sup> Jan	Reception Family Workshop -9- 10am Birch Class (All children) Maple Class (surnames A-K inc.)
19 <sup>th</sup> Jan	Reception Family Workshop -9-10am Holly Class (All children) Maple Class (surnames L-Z inc.)
22 <sup>nd</sup> Jan	Nursery Family Workshop Nam- 9 - 10am - Npm 2 - 3pm
24 <sup>th</sup> Jan	PTA meeting 7pm
2 <sup>nd</sup> Feb	Parental Partnership - 9.10am
Week 12 <sup>th</sup> Feb	Reception - Balanceability all week (details to follow)
19 <sup>th</sup> Feb 23 <sup>rd</sup> Feb	<b>HALF TERM HOLIDAY</b> <b>Tree House Holiday Club Open</b>
28 <sup>th</sup> Feb	PTA meeting 7pm TBC
1 <sup>st</sup> Mar	World Book Day (details to follow)
1 <sup>st</sup> Mar	Parental Consultations - 5-7pm
6 <sup>th</sup> Mar	Parental Consultations - 5-7pm
7 <sup>th</sup> Mar	Reception Mothers' Day Assembly 9.15am
7 <sup>th</sup> Mar	Reception Mother's Day Lunch
8 <sup>th</sup> Mar	Parental Consultations - 4-6pm
9 <sup>th</sup> Mar	Nursery Mothers' Day Concert 11am Acorns - 2.30pm Conkers
12 <sup>th</sup> Mar	Year 1 Family Workshop Elm Class (All children) Willow Class (surnames A-K inc.)
14 <sup>th</sup> Mar	Year 1 Family Workshop 9 - 10am Hazel Class (All children) Willow Class (surnames L-Z inc.)
16 <sup>th</sup> Mar	Parental Partnership - 9.10am
Week 19 Mar	Year 1 to visit Avoncroft Museum (TBC details to follow)
22 <sup>nd</sup> Mar	Year 2 Family Workshop 9 - 10am Oak Class (All children) Rowan Class (surnames A-K inc.)
23 <sup>rd</sup> Mar	Year 2 Family Workshop 9 - 10am Ash Class (All children) Rowan Class (surnames L-Z inc.)
23 <sup>rd</sup> Mar	Sport Relief Day
23 <sup>rd</sup> Mar	PTA Easter Disco (details to follow)
28 <sup>th</sup> Mar	Y1 & 2 to visit Baptist Church for Easter Celebration TBC
29 <sup>th</sup> Mar	<b>SPRING TERM ENDS</b>
16 <sup>th</sup> Apr	<b>SUMMER TERM STARTS</b>